

BUUS Køleteknik A/S and BUUS Ice A/S



BUUS group consists of two companies: Buus Køleteknik A/S and Buus Ice A/S.

BUUS was established back in 1958. Today the company is specialized in the field of projecting and erecting refrigeration plants as well as ice machines in the range 200 – 80.000 kg/24 hours on single frame machines.

The ice machines are produced in Denmark. The company is located on the island Mors.

We are able to handle enquiries for spare parts from our own stock. Spare parts and machines are sent on a daily basis.

Our technicians are very well educated and trained to service our installations.



BUUS, Frøslev Mors

The Buus group wishes to be in front with the development within the refrigeration segment. We hold all certificates and approvals in our companies.

A **BUUS** plant can be delivered for different types of refrigerant, covering:

- ✓ **HFC/HCFC**
- ✓ **Ammonia**
- ✓ **CO₂**
- ✓ **Brine**

BUUS Group wish to be your innovative supplier when it comes to new thinking. This covers refrigeration plants, freezing and ice machines. Or perhaps something complete different?

This means that our solutions are often based on customer demands. We take pride in that input from our customers, resulting in even better solutions.

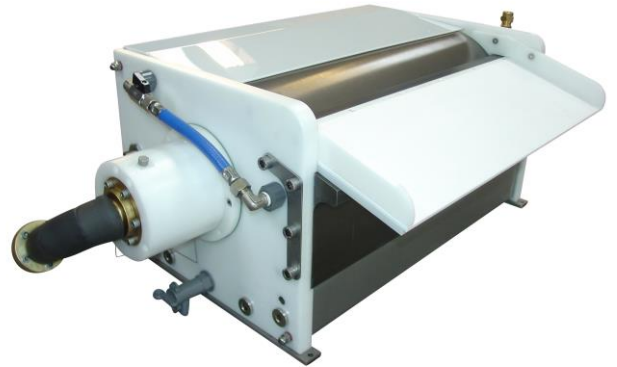
As customer you can be confident that your **BUUS** plant fulfills existing and known future regulations. You will also benefit from our existing customers who have supplied us with best possible solutions implemented in our plants. This is an ongoing development.

BUUS Ice machines type M, C, D, E and F.

These machines were originally designed and optimized for onboard installations. They are extremely rugged and compact and are therefore easily installed in fish holds without occupying valuable space.

The machines are optimized and of high standard based on minimum size.

The evaporator forming the ice is produced from aluminum. This means maximum capacity on minimum size requirements.



Ice machine type D

More ice in less space.



Ice machine unit. Marine type.

All models for various types of refrigerant:

CO₂, Ammonia, HFC and Brine

Type	Capacities Kg/24h	Dimension LxBxH mm	Weight
SM	200 - 550	700x475x350	60
C	800 - 2.000	1060x710x510	140
D	1.000 - 3.500	1200x605x510	190
E	3.000 - 4.500	1385x605x510	220
F	5.000 - 10.000	1885x605x510	260

Data. Ice machine type M, C, D, E and F

BUUS Ice machines type V and VD.

These machines are our "heavy duty" series.

The V and VD series were previously produced by Atlas and Sabroe.

The series is developed so that reliable performance in a continuous operation over several years is obtained.

Around the world V and VD machines with an age of more than 40 years are still going strong.

The production of a VD746 is then more than 19 billion ton of ice.

All models for various types of refrigerant:

CO₂, Ammonia and HFC.



Ice machines type V-VD

Ice machine type VD746ULTS. Supplied to a customer in the Middle East.

Type	Capacities Kg/24h	Dimensions LxBxH mm	Weight
V156	4.300 - 8.800	1230x1145x1845	1100
V316	8.000 - 23.300	1230x1165x2495	1360
V373	10.000 - 27.700	1230x1265x2800	1680
V619	17.100 - 44.100	1230x1265x3625	1900
VD746	21.400 - 55.400	1960x1210x2800	3350
VD1206	34.200 - 88.200	1960X1280X3700	4400

Data. Ice machine type V-VD

BUUS Slurry Ice generator.

Slurry ice is a homogeneous mix of ice and water.

The salt content is 1 to 3% to make it pumpable and smooth.

BUUS' slurry ice series is based on standard ice machines. Since the ice is formed on the outer diameter of the freezing drum, the machine is not so sensitive to the salt content of the inlet water. This is important on marine applications, since good slurry can be produced even if the salt content varies in different areas.

Total plants incl. storage and tapping stations are available.



Slurry on board an African trawler



Slurry plant type SSD8000

Capacities:

Slurry ice generators produces approximately three times as much slurry as solid ice. A one ton flake ice machine then produces three ton of slurry ice per 24 hours.

BUUS has a program for correct calculation and we are happy to calculate also your assignment to secure the optimal solution.



Slurry plant type SVD746

BUUS condensing units and ice handling.

The core business of **BUUS** is flake ice machines and industrial refrigeration. We also offer design and project management as part of the scope.

If you wish, we can supply “the whole package”; iceflaker, condensing unit and ice storage.

BUUS’ engineers are ISO-9001 certified for all applications within refrigeration.



Condensing unit for BUUS 24 ton / 24h flake ice plant. CO2 DX.



Ice storage. Flake ice from the V316 iceflaker is transported to insulated bins by ançers.



Iceflaker unit. Air cooled. Type SD1000ULT. Capacity: 1000 kg/24h. For tropical conditions.

BUUS perform tasks throughout Denmark and the rest of the world. What can we do for you and your company?

Please contact us.

Tel. +45 97 74 40 33.

E-mail buus@buus.dk

BUUS Special plants.

BUUS is much more than just traditional refrigeration plants.

The project department has handled assignments in freezing of special medias like:

- ✓ **Pet food**
- ✓ **Fruit juice for concentrate**
- ✓ **Instant coffee**
- ✓ **Blood plasma**
- ✓ **Cellulose fibers at -80°C**

**Please feel free to ask us
for advice**



Water chiller +3°C



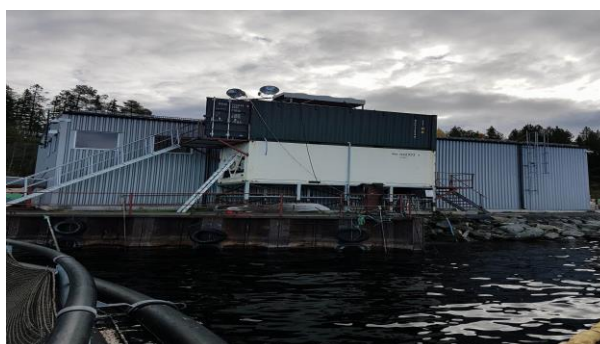
Complete ice plant, Container solution



Blood and plasma ice machine type VS373



Shock freezing of cellulose fibers. -80°C plant



CO2 plant in container, fish factory

BUUS

KØLETEKNIK A/S

